

# 3-Light Vanity

Part Number	Finish
<b>A17013-BK</b>	Black
<b>A17013-BN</b>	Brushed Nickel
<b>A17013-CH</b>	Chrome

Project \_\_\_\_\_  
Date \_\_\_\_\_  
Type \_\_\_\_\_  
Location \_\_\_\_\_

## Product Specifications

Description	This sleek 3-light vanity offers a contemporary style to complement a modern or traditional décor. Well suited for bathrooms, and master bathrooms.
Shade	White Opal Glass
Dimensions	21"Width x 7-3/4"Height x 5-3/4"Extension
Lamps	3 x LED A19 (E26 Medium Base) not included
Certifications	cETLus Listed   CSA Certified Suitable for Damp Location
Features	120V   60Hz Used Wall mount (hardware included) Can be installed in upward or downward position



Black



Brushed Nickel



Chrome



# 3-Light Vanity

Part Number

**A17013-BK**

**A17013-BN**

**A17013-CH**

Finish

Black

Brushed Nickel

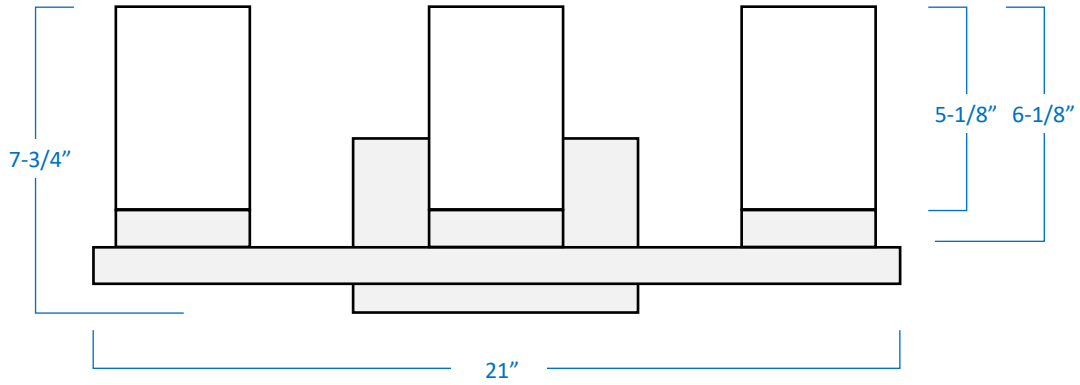
Chrome

Project \_\_\_\_\_

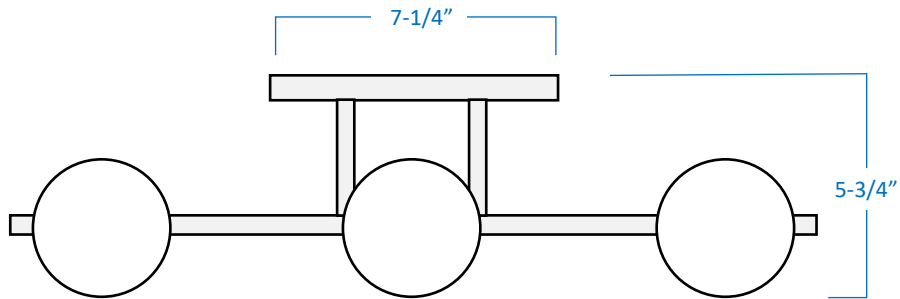
Date \_\_\_\_\_

Type \_\_\_\_\_

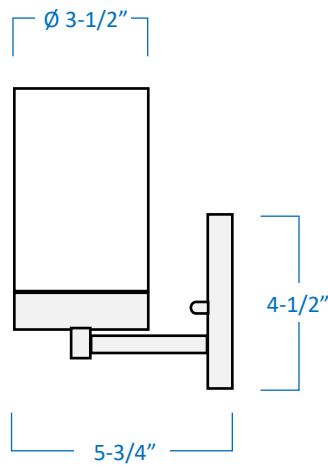
Location \_\_\_\_\_



Front View



Top View



Side View



GTA Office: 151 Aviva Park Drive, Woodbridge  
Ottawa Office: 200 Iber Road, Unit 5, Stittsville

Tel: 905-669-1230  
Tel: 613-836-1977

www.sanremolighting.com  
© All rights reserved