

3-Light Flush Mount

Part Number
B51033-BN

Project _____

Date _____

Type _____

Location _____

Product Specifications

| | |
|----------------|---|
| Description | Rhythm Collection – 3-Light Flush Mount Contemporary style and sophisticated design will accent any home décor. |
| Finish | Brushed Nickel |
| Shade | White glass |
| Dimensions | 19" Diameter x 6-1/2" Height |
| Lamps | 3 x LED A19 (E26 Medium Base) INCLUDED |
| Certifications | cULus Certified CSA Certified |
| Features | 120V 60Hz Ceiling mount only Mounting hardware included |



GTA Office: 151 Aviva Park Drive, Woodbridge
Ottawa Office: 200 Iber Road, Unit 5, Stittsville

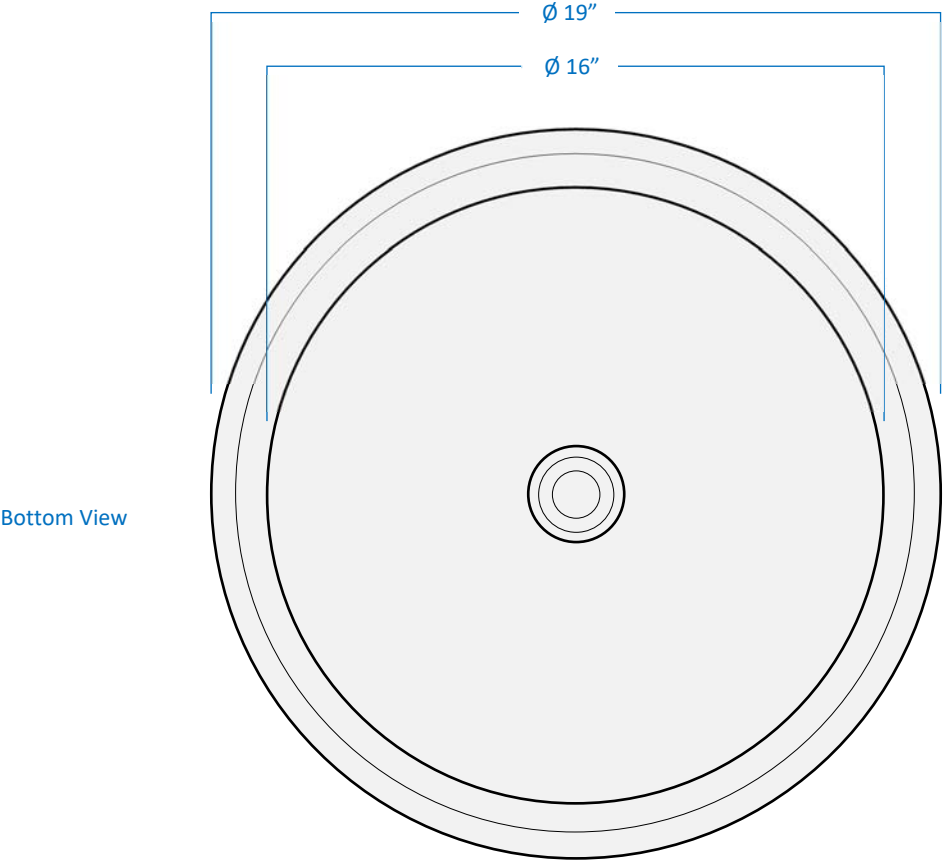
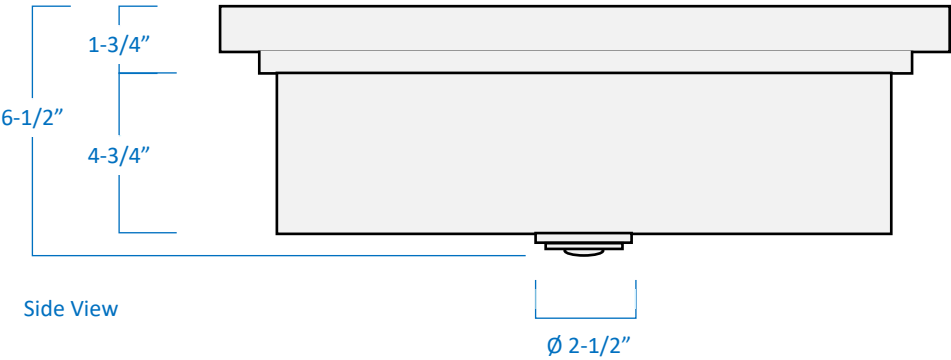
Tel: 905-669-1230
Tel: 613-836-1977

www.sanremolighting.com
© All rights reserved

3-Light Flush Mount

Part Number
B51033-BN

Project _____
Date _____
Type _____
Location _____



GTA Office: 151 Aviva Park Drive, Woodbridge
Ottawa Office: 200 Iber Road, Unit 5, Stittsville

Tel: 905-669-1230
Tel: 613-836-1977

www.sanremolighting.com
© All rights reserved