

# 3-Light Flush Mount

Part Number

**A51033-BN**

Project \_\_\_\_\_

Date \_\_\_\_\_

Type \_\_\_\_\_

Location \_\_\_\_\_

## Product Specifications

Description	Rhythm Collection – 3-Light Flush Mount Contemporary style and sophisticated design will accent any home décor.
Finish	Brushed Nickel
Shade	White glass
Dimensions	19" Diameter x 6-1/2" Height
Lamps	3 x LED A19 (E26 Medium Base) not Included
Certifications	cULus Certified   CSA Certified
Features	120V   60Hz Ceiling mount only (hardware included)



GTA Office: 151 Aviva Park Drive, Woodbridge  
Ottawa Office: 200 Iber Road, Unit 5, Stittsville

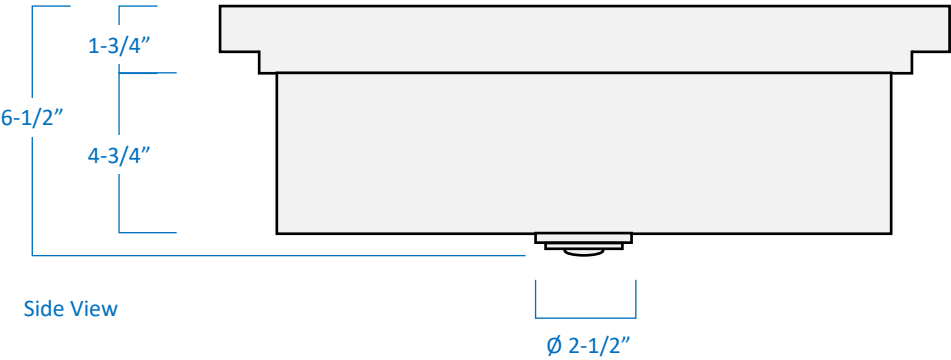
Tel: 905-669-1230  
Tel: 613-836-1977

[www.sanremolighting.com](http://www.sanremolighting.com)  
© All rights reserved

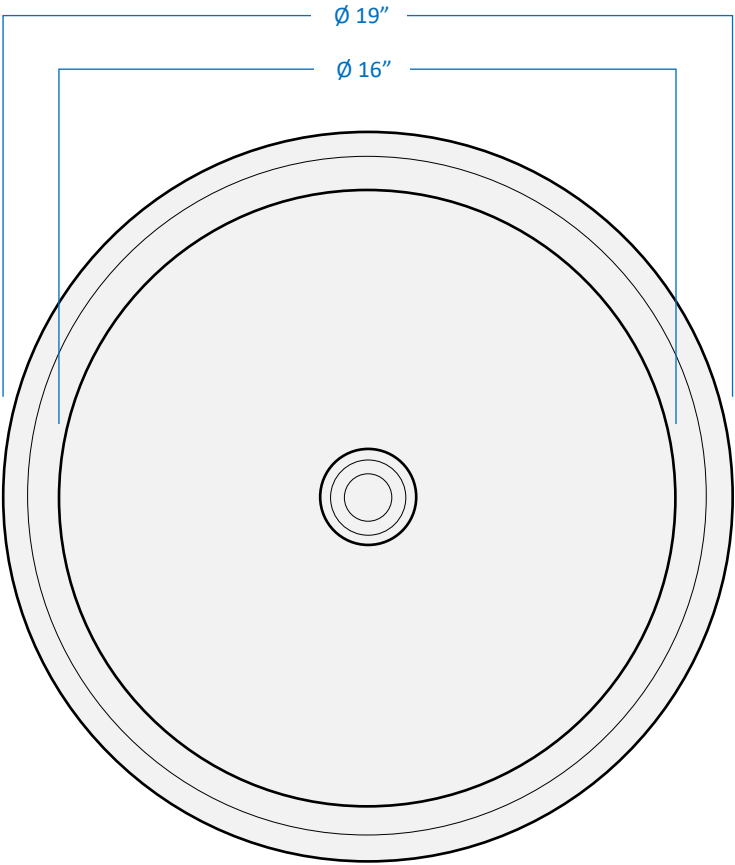
# 3-Light Flush Mount

Part Number  
**A51033-BN**

Project \_\_\_\_\_  
Date \_\_\_\_\_  
Type \_\_\_\_\_  
Location \_\_\_\_\_



Bottom View



GTA Office: 151 Aviva Park Drive, Woodbridge  
Ottawa Office: 200 Iber Road, Unit 5, Stittsville

Tel: 905-669-1230  
Tel: 613-836-1977

[www.sanremolighting.com](http://www.sanremolighting.com)  
© All rights reserved